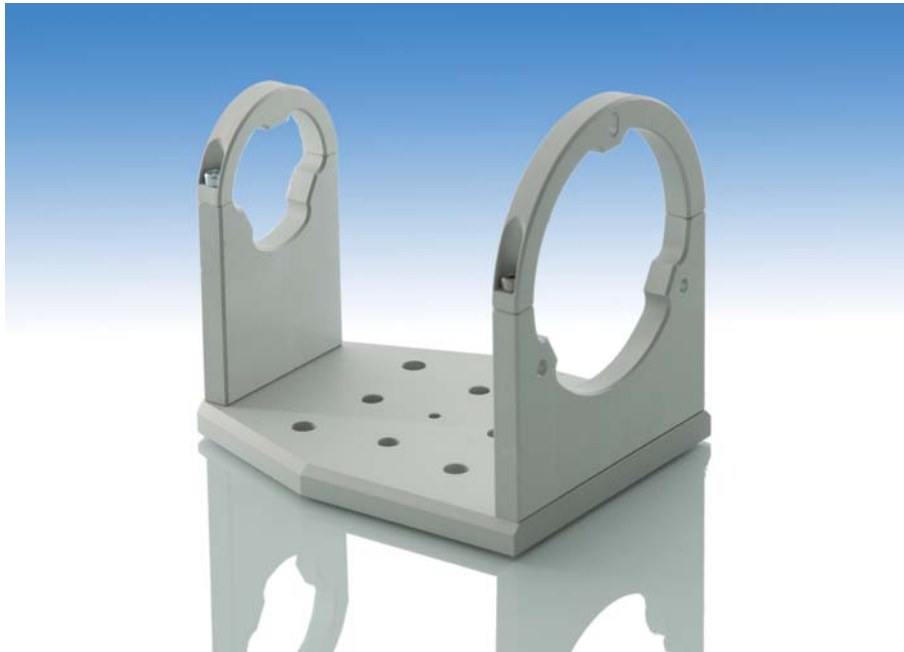


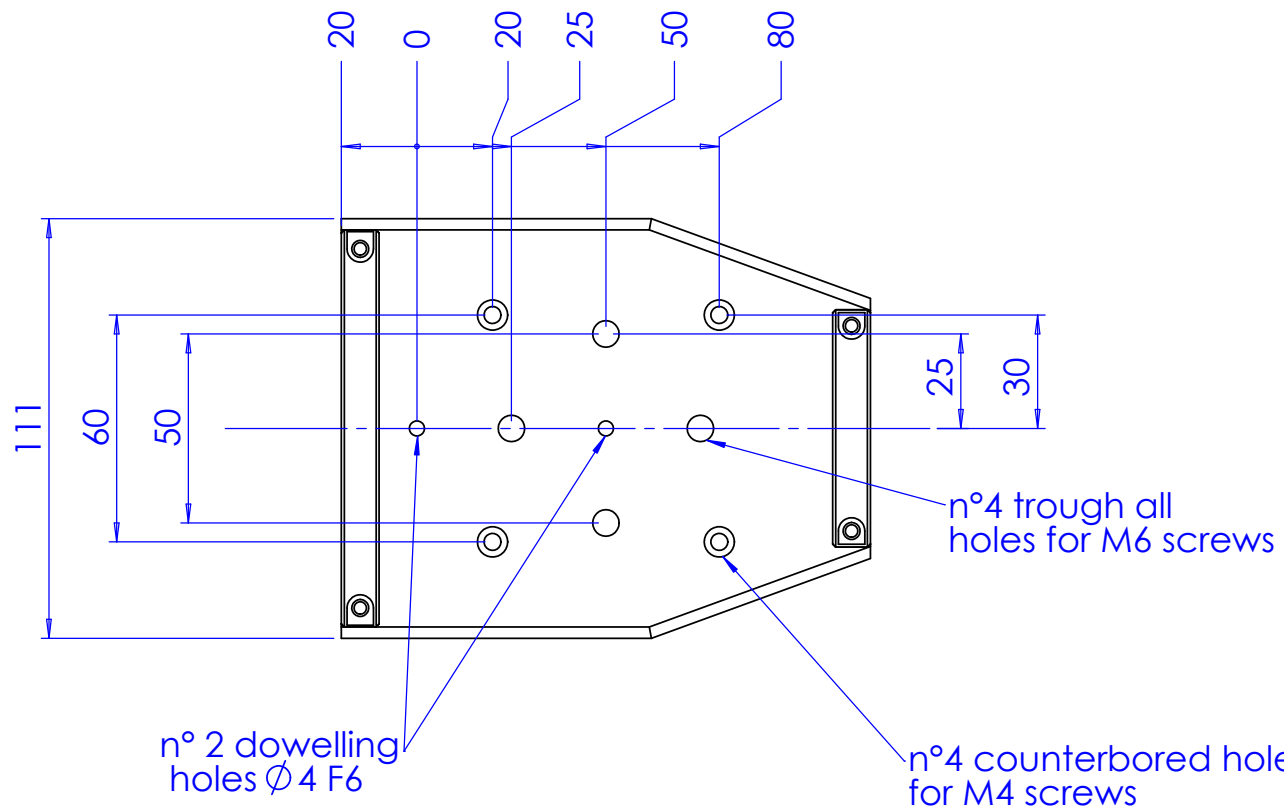
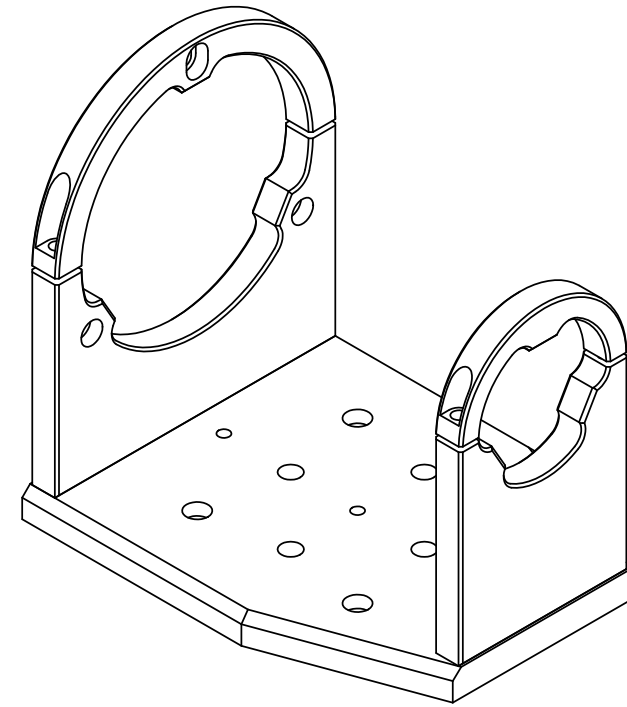
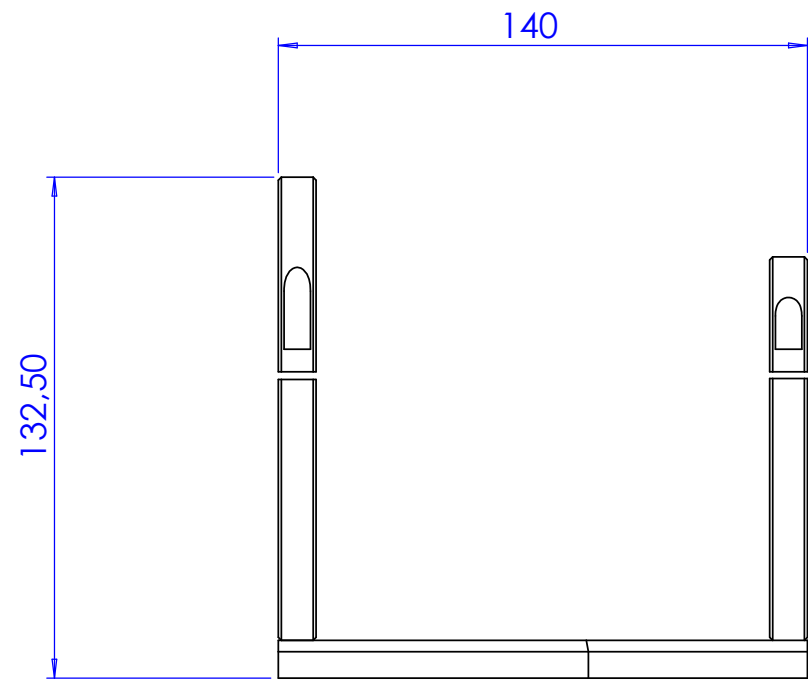
CMH048

Mechanical Holder for 48-type telecentric optics



part number		CMH048
Compatible Optics		
Matrix Camera Telecentric		TC1348, TC1248, TC2348
Large and Very Large Detector Telecentric		TC4M48, TC2M48, TC16M048
Very Large Detector Telecentric		TC16M048
LT CL illuminators		LTCL48/x
Compatible Plates		CMPT48
Length	(mm)	140,0
Width	(mm)	111
Height	(mm)	132,5
Optical Axis Height	(mm)	80,0
Weight	(g)	640,0

Rev No.	Description	Date	Name
A	new part	16/09/09	N.Santini



Material Aluminum - UNI EN 573 EN AW 6063		Mass 639.3	Scale 1:2						
Surface treatment Gray Anodization		Project-Prod.item/Instrument CMHO48							
Geometrical tolerance (ISO 2768-2)			Description CMHO48						
Linear tolerance (ISO 2768-2)									
0.5 ±3	>3± 6	>6± 30	>30± 120	>120 ±400	>400± 1000	>1000 ±2000	>2000 ±4000	Undimensioned bevels 0.5x45°	Undimensioned radii R 0.5
±0.1	±0.1	±0.2	±0.3	±0.5	±0.8	±1.2	±2	Date Designed 16/09/09 N.Santini Draw 16/09/09 N.Santini Checked X C. Sedazzari	
		Drawing No. 18839-0-A		Sheet 1/1		Reproduction forbidden without specific authorization			
OPTO ENGINEERING S.r.l. - 46100 Mantova Italy - Via Cremona, 29/2 - Tel/fax +39 0376 223525 - e-mail: info@opto-engineering.com - http://www.opto-engineering.com									