

**LTCL UV 48**

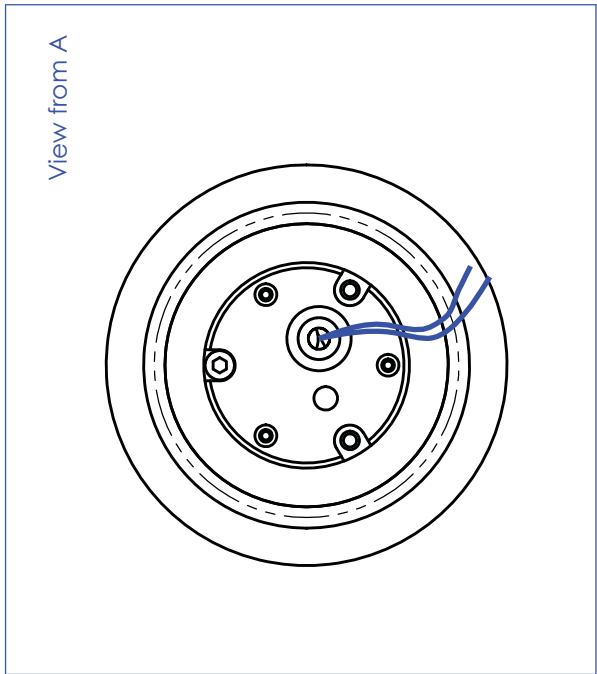
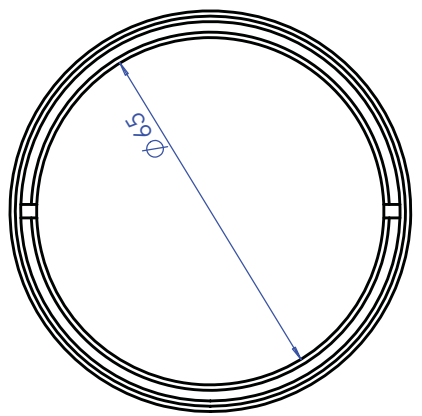
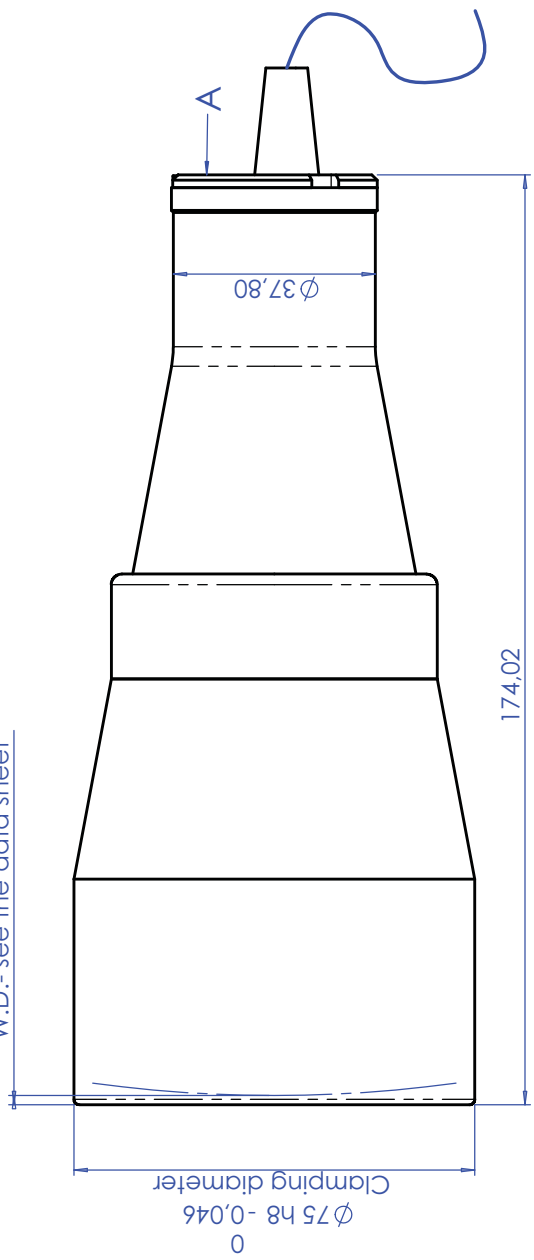
# UV LED Collimators For TCUV Telecentric Lenses



part number	LTCLUV48	
<b>Beam Diameter</b>	(mm)	60,0
<b>Emission Peak Wavelength</b>	(nm)	405,00
<b>Emission Bandwidth</b>	(nm)	+/- 20
<b>Beam Divergence</b>	(deg)	< 0,5
<b>Optical Power Output</b>	(mW)	< 40
<b>Eye Safety Class</b>		IIIb LED Product
<b>Length</b>	(mm)	86,7
<b>Outer Diameter</b>	(mm)	38,0
<b>Compatible Telecentric Lenses</b>		
	TC 12	48
	TC 23	48
<b>DEVICE POWER RATINGS</b>		
DC Voltage	(volt)	12 to 24
Power Consumption	(watt)	< 2 watt
<b>LED DIRECT DRIVE RATINGS</b>		
Max Forward DC Voltage	(volt)	3,7
Max Forward Current	(mA)	350

Rev. No.	Description	Date	Name
A	First light	09/05/08	A. Vismara

1,73  
From lens to chassis edge  
W.D.- see the data sheet



Material	N.A.	Mass	0.63 kg	Scale	1:1
Surface treatment	N.A.	Project/Prod item/Instrument	LT CL UV48		
Geometrical tolerance (ISO 2768-2)	Class	K	Undimensioned bevels	Description	
	Class			Assembly	
Linear tolerance (ISO 2768-2)	Class	mm	1x45°	Drawing No.	
0.5	>30+	>120	>400+	>1000	>2000
-3	>6+	30	120	+400	+2000
	6	±0.2	±0.3	±0.5	±0.8
	±0.1	±0.2	±0.3	±0.5	±1.2
					±2
					Radial
www.opto-engineering.com			Name		
<p>OPTO ENGINEERING S.r.l. - 46100 Mantova Italy - Via Cremona, 29/2 - Tel. +39 0376 263665 - e-mail: info@opto-engineering.com - http://www.opto-engineering.com</p>			Designed	09/05/08	A. Vismara
			Draw	09/05/08	A. Vismara
			Checked	X	C. Sedazzari
			Date		Sheet
					1/1
Reproduction forbidden without specific authorization					