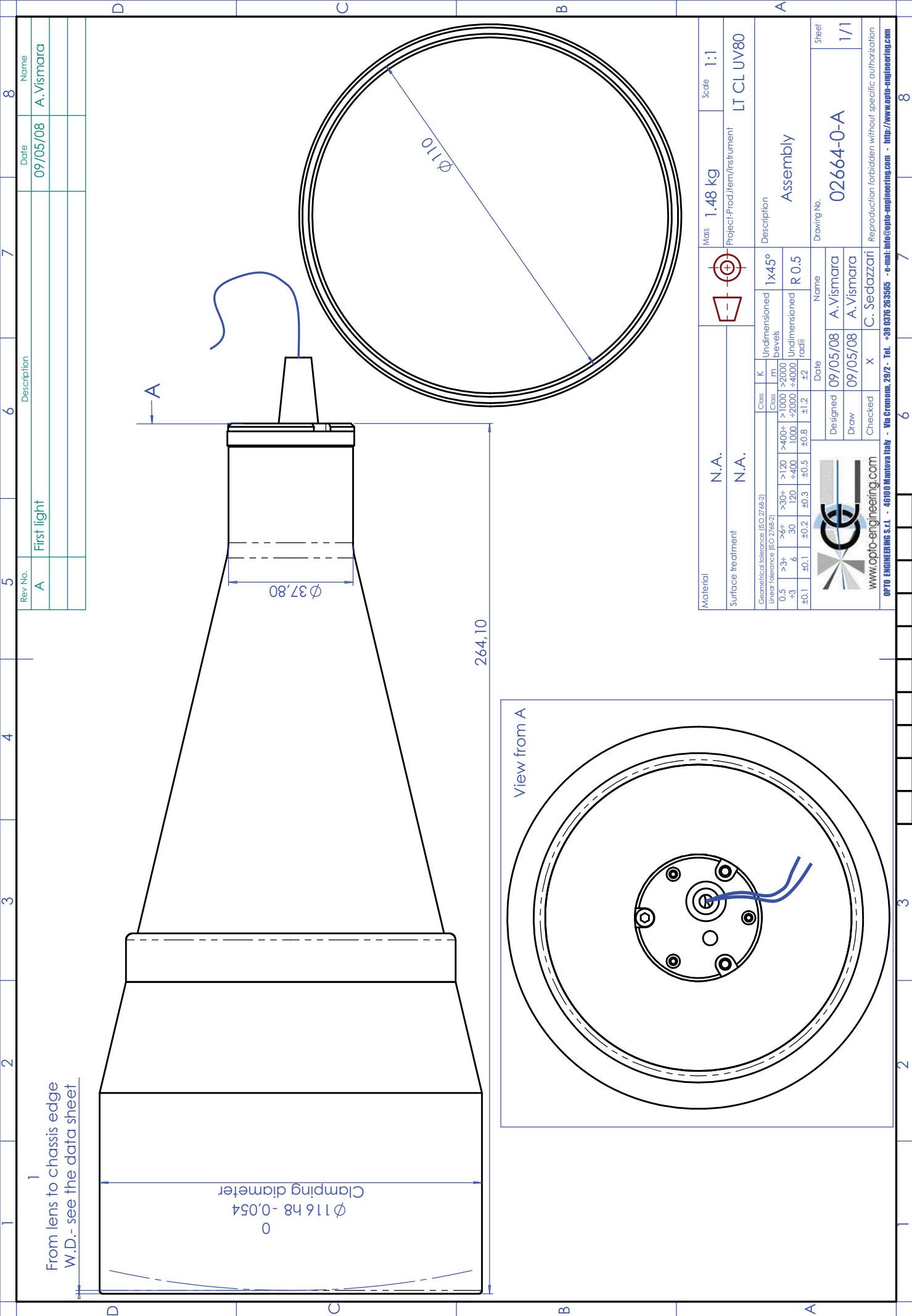


LTCL UV 80

UV LED Collimators For TCUV Telecentric Lenses



part number	LTCLUV80	
Beam Diameter	(mm)	100,0
Emission Peak Wavelength	(nm)	405,00
Emission Bandwidth	(nm)	+/- 20
Beam Divergence	(deg)	< 0,5
Optical Power Output	(mW)	< 40
Eye Safety Class		IIIb LED Product
Length	(mm)	174,0
Outer Diameter	(mm)	75,0
Compatible Telecentric Lenses		
	TC 12	80
	TC 23	80
DEVICE POWER RATINGS		
DC Voltage	(volt)	12 to 24
Power Consumption	(watt)	< 2 watt
LED DIRECT DRIVE RATINGS		
Max Forward DC Voltage	(volt)	3,7
Max Forward Current	(mA)	350



From lens to chassis edge
W.D. - see the data sheet

0
Clamping diameter
 $\varnothing 116 h8 -0.054$

$\varnothing 37.80$

264,10

$\varnothing 110$

View from A

Material	N.A.		Class	K	Undimensioned	Scale	1:1
Surface treatment	N.A.		Class	m	1x45°	Project/Prod item/Instrument	LT CL UV80
Geometrical tolerance [ISO 2768-2] linear tolerance [ISO 2768-2]	0.5	>30+	>120	>400+	>1000	Description Assembly	Drawing No. 02664-0-A
	>3+	>6+	30	120	>2000		
	±3	6	±0.3	±0.8	±1.2		
	±0.1	±0.2	±0.3	±0.5	±2		
www.opto-engineering.com		Date		Name		Sheet	
OPTO ENGINEERING S.r.l. - 46100 Mantova Italy - Via Cremona, 29/2 - Tel. +39 0376 263665 - e-mail: info@opto-engineering.com - http://www.opto-engineering.com		Designed		A. Vismara		1/1	
		Draw		A. Vismara			
		Checked		C. Sedazzari			
		X					



Reproduction forbidden without specific authorization