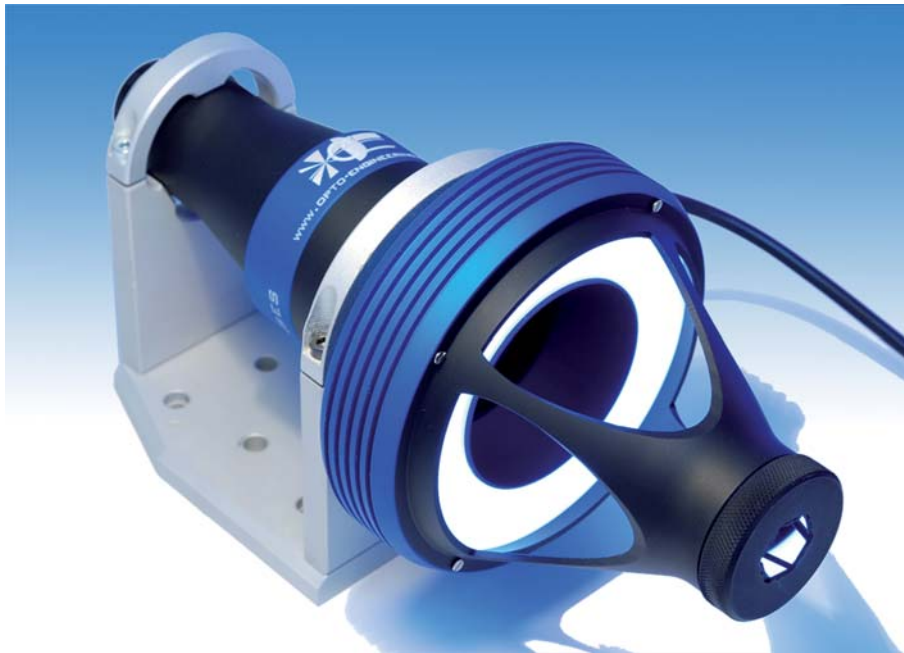


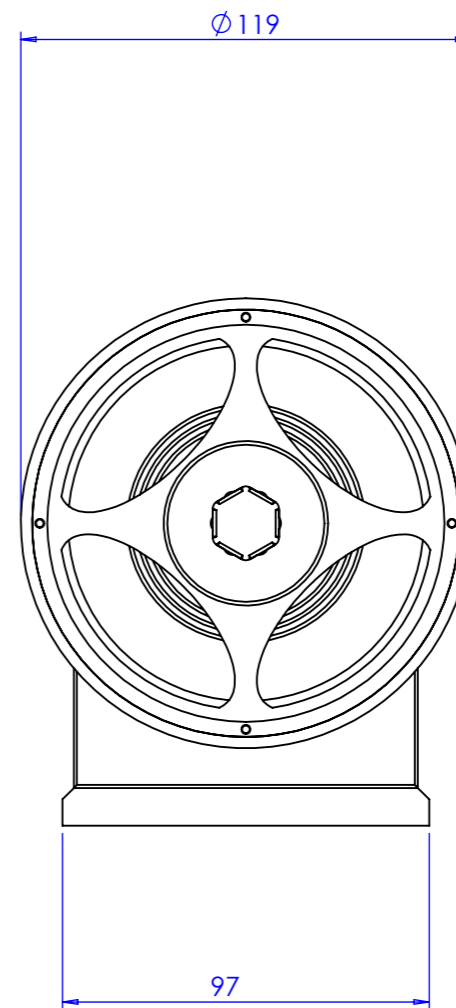
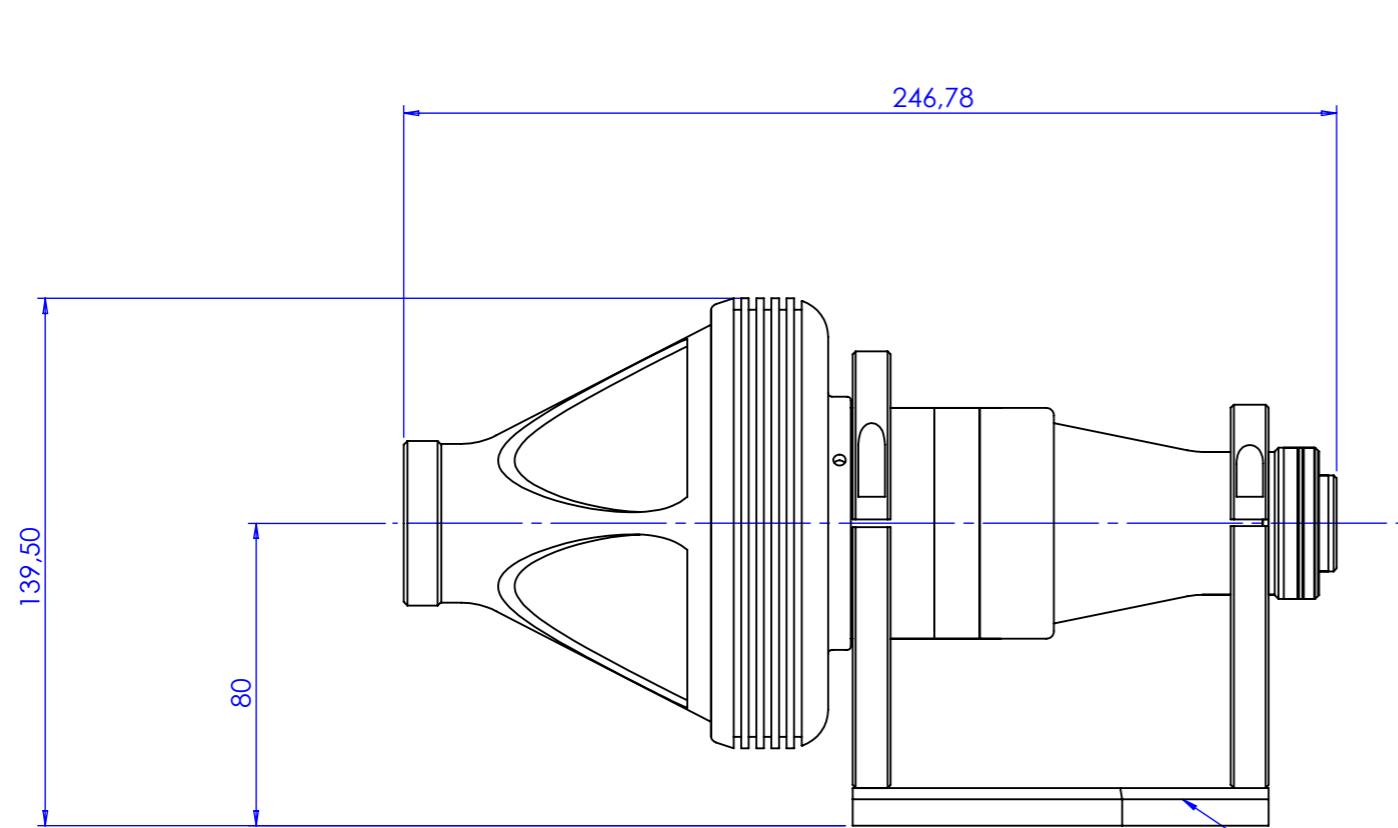
**PCMP023**

# MicroPolyview lens for 2/3" detectors

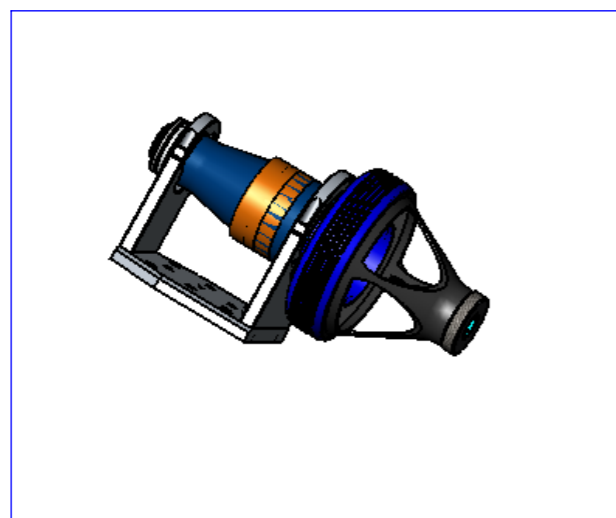



part number		PCMP023
<b>Detector Size</b>		2/3"
<b>Max Inspection Height with diameter 2.5 mm</b>		6
<b>Max Inspection Height with diameter 5 mm</b>		4,5
<b>Max Inspection Height with diameter 7.5 mm</b>		3
<b>Max Inspection Height with diameter 10 mm</b>		1
<b>Wavelength range</b>	(nm)	450 .. 650
<b>Working distance</b>	(mm)	1,5 .. 5
<b>CTF @ 70 lp/mm</b>	(%)	> 40
<b>F-number</b>		8
<b>Diameter</b>	(mm)	119
<b>Length</b>	(mm)	262
<b>Weight</b>	(g)	980
<b>Mount</b>		C
<b>Illuminator Voltage</b>	(V, DC)	24
<b>Illuminator Power Consumption</b>	(watt)	18

Rev No.	Description	Date	Name
A	Nuova parte	02/02/10	N.Santini



OE CMHO36



Material	N.A.		Mass	Scale	1:2				
Surface treatment	N.A.		Project-Prod.item/Instrument PCMPXXY						
Geometrical tolerance (ISO 2768-2)			Class	K	Undimensioned bevels 1x45°				
Linear tolerance (ISO 2768-2)			Class	m					
0.5 ±3	>3÷ 6	>6÷ 30	>30÷ 120	>120 ±400	>400÷ 1000	>1000 ±2000	>2000 ±4000	Undimensioned radii R 0.5	Description Layout PCMP023
±0.1	±0.1	±0.2	±0.3	±0.5	±0.8	±1.2	±2		
 <a href="http://www.opto-engineering.com">www.opto-engineering.com</a>			Date	Name	Drawing No.	Sheet			
			Designed	02/02/10	N.Santini	19131-1-A	1/2		
			Draw	02/02/10	N.Santini				
Checked			X	Reproduction forbidden without specific authorization					
OPTO ENGINEERING S.r.l. - 46100 Mantova Italy - Via Cremona, 29/2 - Tel. +39 0376 263565 - e-mai: info@opto-engineering.com - http://www.opto-engineering.com									