



TC 12 48

0,134x Bi-Telecentric lens for detectors up to 1/2"



part number		TC 12 48
Magnification		0,134 +/- 3%
Field Of View		
with 1/4" (3,6 x 2,7) detector	(mm)	26,9 x 20,2
with 1/3" (4,8 x 3,6) detector		35,9 x 26,9
with 1/2" (6,4 x 4,8) detector		47,8 x 35,9
with 1/1.8" (7,13 x 5,37) detector		53,3 x 40,1
with 2/3" (8,8 x 6,6) detector		diam. = 49,3
Working Distance	(mm)	134,6 +/- 4
Working F-number		8
Telecentricity	(degree)	< 0,1
Distortion	(%)	< 0,1
Field Depth	(mm)	37,0
CTF @70 lp/mm	(%)	> 40
Image side N.A.		0,0620
Object side N.A.		0,0083
Mount		C
Length	(mm)	181,5
External diameter	(mm)	75,0
Weight	(g)	700

Possible vignetting at the image corners with 1/1.8" detectors

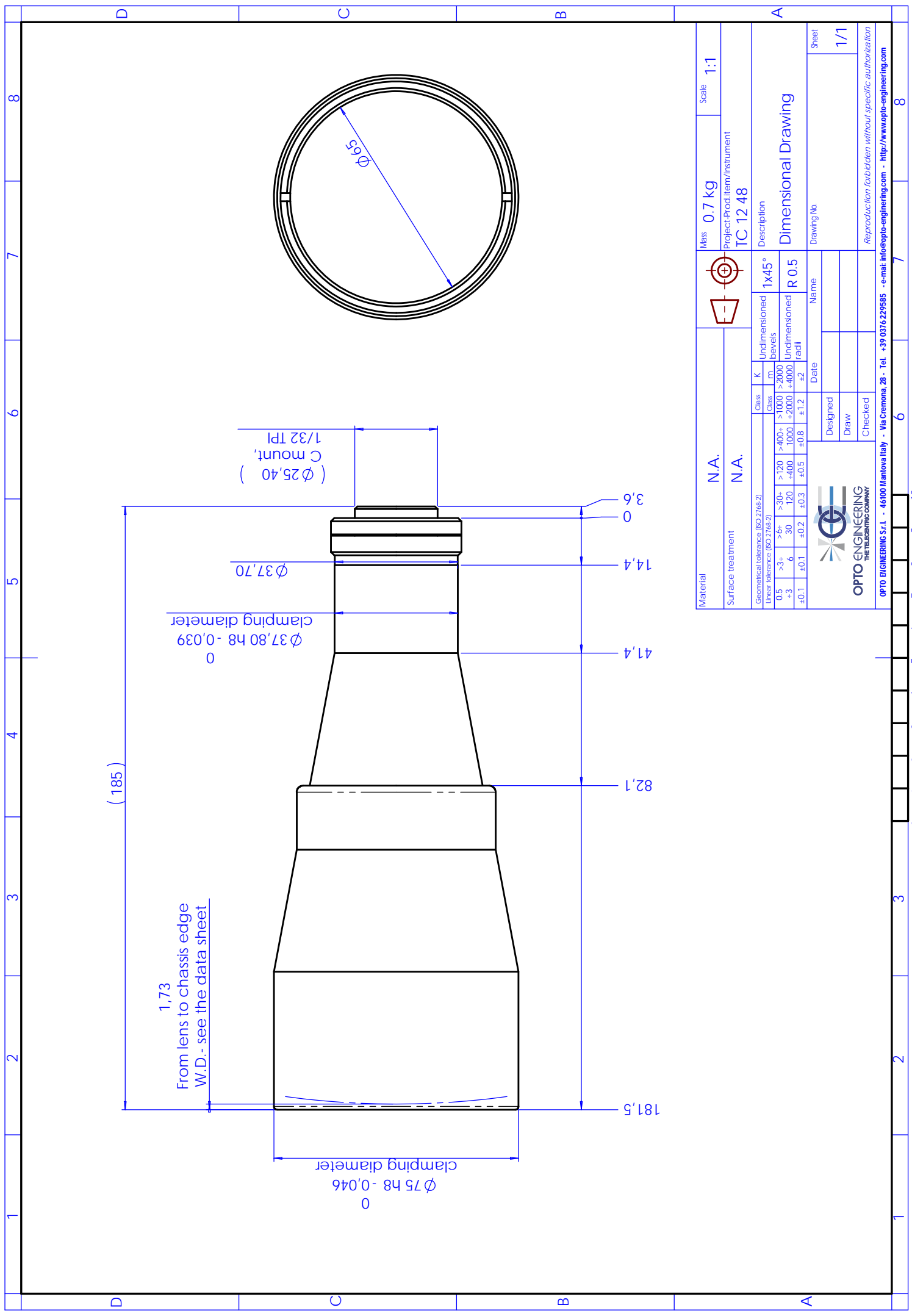
ACCESSORIES AND OPTIONS:



Collimated/Telecentric illumination:
Compatible with LTCL48 illuminator;
green light suggested.



Clamping Mechanics:
Compatible with CMHO48.



(185)

1,73

From lens to chassis edge
W.D. - see the data sheet

$\phi 37,80 \text{ h8} - 0,039$
0
clamping diameter

$\phi 37,70$

($\phi 25,40$)
C mount,
1/32 TPI

$\phi 75 \text{ h8} - 0,046$
0
clamping diameter

181,5

82,1

41,4

14,4

3,6
0

Material	N.A.		Mass	0.7 kg	Scale	1:1
Surface treatment	N.A.		Project-Prod.item/Instrument	TC 12 48		
Geometrical tolerance (ISO 2768-2)	Class	K	Description			
Linear tolerance (ISO 2768-2)	Class	m	Dimensional Drawing			
0.5	>30-	>120	Undimensioned bevels	1x45°		
>6+	30-120	>400+	Undimensioned	R 0.5		
-3	6	1000	Undimensioned	R 0.5		
+0.1	± 0.1	± 0.3	radial	± 2		
Date			Drawing No.			
Designed			Sheet			
Draw			1/1			
Checked			Reproduction forbidden without specific authorization			
			http://www.opto-engineering.com			
OPTO ENGINEERING S.r.l. - 46100 Mantova Italy - Via Cremona, 28 - Tel. +39 0376 229585 - e-mail: info@opto-engineering.com			http://www.opto-engineering.com			