

TC 16M 056

0,64x Telecentric Lens for 35mm-type
and line Detectors (43 mm diagonal)



part number	TC 16M 056	
Magnification		0,641 +/- 3%
Field Of View		
with 36 x 24 mm detector	(mm)	56,2 x 37,5
with 4k x 10 µm detector		63,9
with 4k x 7 µm detector		44,7
with 2k x 14 µm detector		44,7
with 2k x 10 µm detector		31,9
Working Distance	(mm)	150,0 +/- 5
Working F-number		16
Telecentricity	(degree)	< 0,08
Distortion	(%)	< 0,1
Field Depth	(mm)	2,5
CTF @50 lp/mm	(%)	> 40
Image side N.A.		0,031
Object side N.A.		0,020
Mount		F
Length	(mm)	338,5
External diameter	(mm)	80,0
Weight	(g)	1250

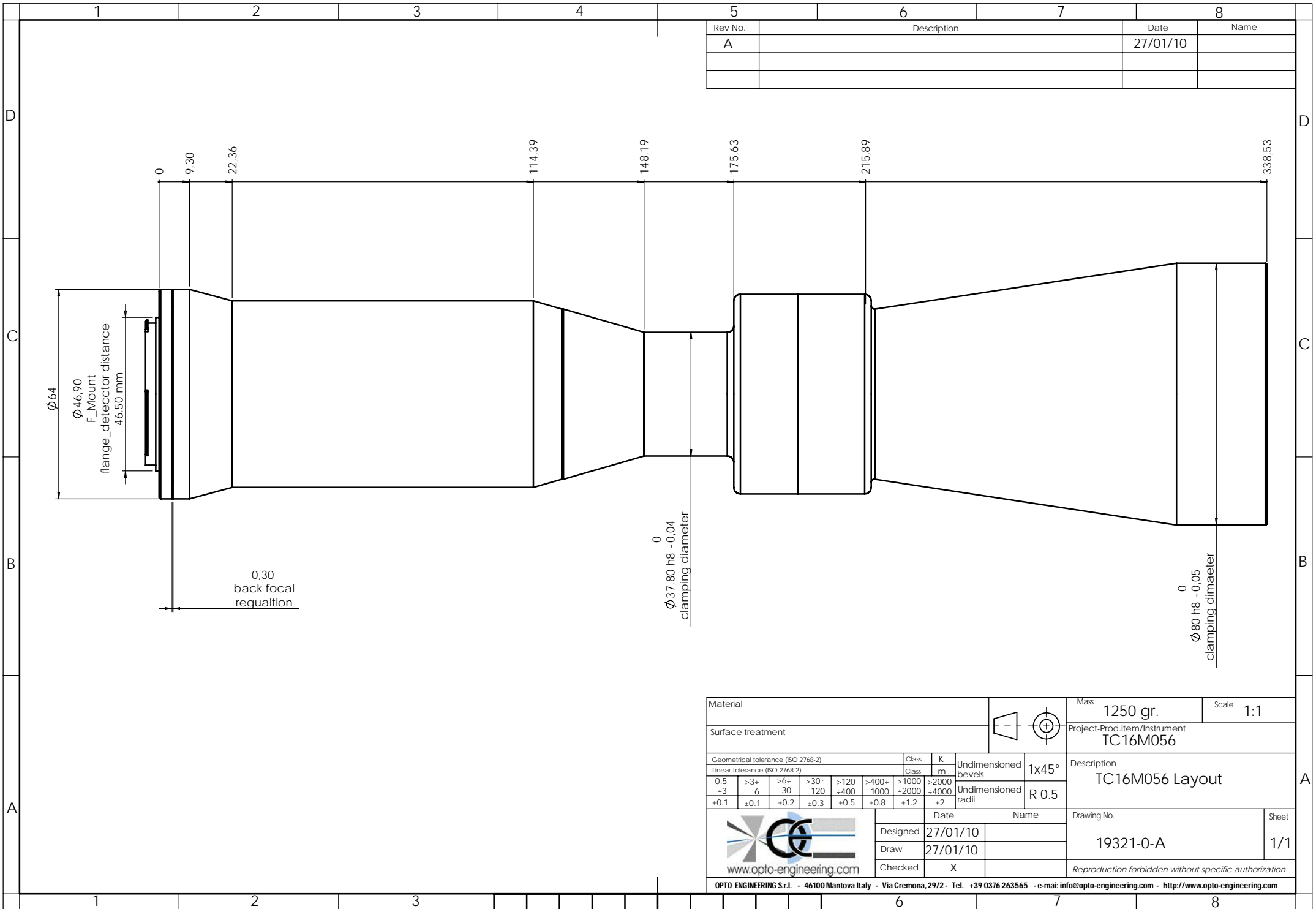
ACCESSORIES AND OPTIONS:



Collimated/Telecentric illumination:
Compatible with LTCL56 illuminator;
green light suggested.



Clamping Mechanics:
Compatible with CMH056.



Material				Mass	1250 gr.	Scale	1:1
Surface treatment				Project-Prod Item/Instrument TC16M056			
Geometrical tolerance (ISO 2768-2)		Class	K	Undimensioned bevels		Description	
Linear tolerance (ISO 2768-2)		Class	m	1x45°		TC16M056 Layout	
0.5	>3-	>6-	>30-	>120	>400-	>1000	>2000
±3	6	30	120	±400	±1000	±2000	±4000
±0.1	±0.1	±0.2	±0.3	±0.5	±0.8	±1.2	±2
				Undimensioned radii		R 0.5	
		Date	Name	Drawing No.		Sheet	
Designed		27/01/10		19321-0-A		1/1	
Draw		27/01/10					
Checked		X					
OPTO ENGINEERING S.r.l. - 46100 Mantova Italy - Via Cremona, 29/2 - Tel. +39 0376 263565 - e-mai: info@opto-engineering.com - http://www.opto-engineering.com							