

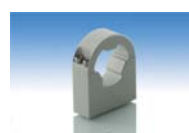
1,33x Bi-Telecentric Lens for detectors up to 2/3"



part number		TC 23 07
Magnification		1,333 +/- 3%
Field Of View	(mm x mm)	
with 1/4" (3,6 x 2,7) detector		2,7 x 2,0
with 1/3" (4,8 x 3,6) detector		3,6 x 2,7
with 1/2" (6,4 x 4,8) detector		4,8 x 3,6
with 1/1.8" (7,13 x 5,37) detector		5,3 x 4,0
with 2/3" (8,8 x 6,6) detector		6,6 x 5,0
Working Distance	(mm)	61,2 +/- 2
Working F-number		11
Telecentricity	(degree)	< 0,08
Distortion	(%)	< 0,08
Field Depth	(mm)	0,5
CTF @70 lp/mm	(%)	> 30
Image side N.A.		0,0450
Object side N.A.		0,0600
Mount		C
Length	(mm)	78,5
External diameter	(mm)	28,0
Weight	(g)	120

ACCESSORIES AND OPTIONS:


Collimated/Telecentric illumination:
Compatible with LTCL23 illuminator;
green light suggested.



Clamping Mechanics:
Compatible with CMH023.

