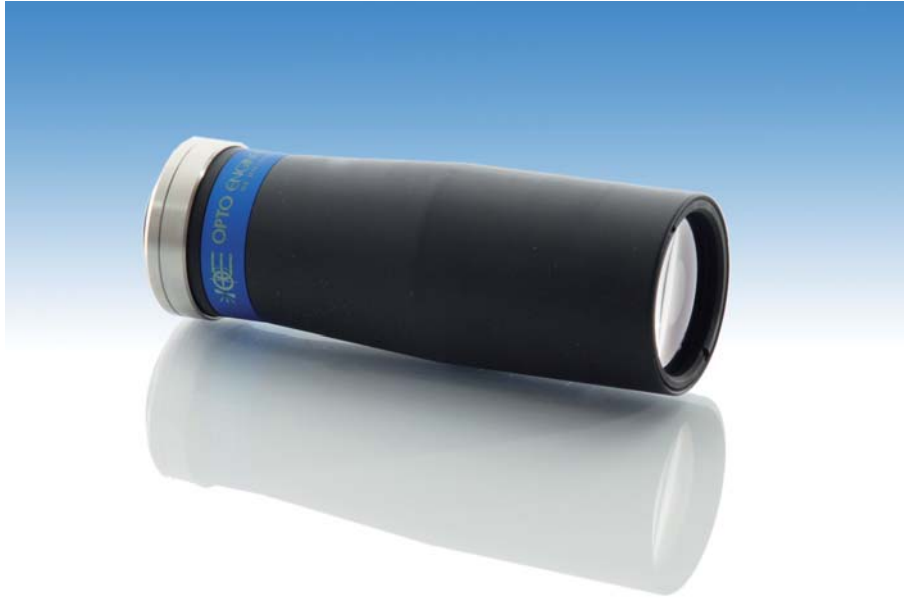


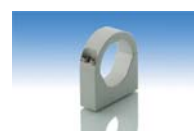
# 0,35x Bi-Telecentric lens for detectors up to 2/3"



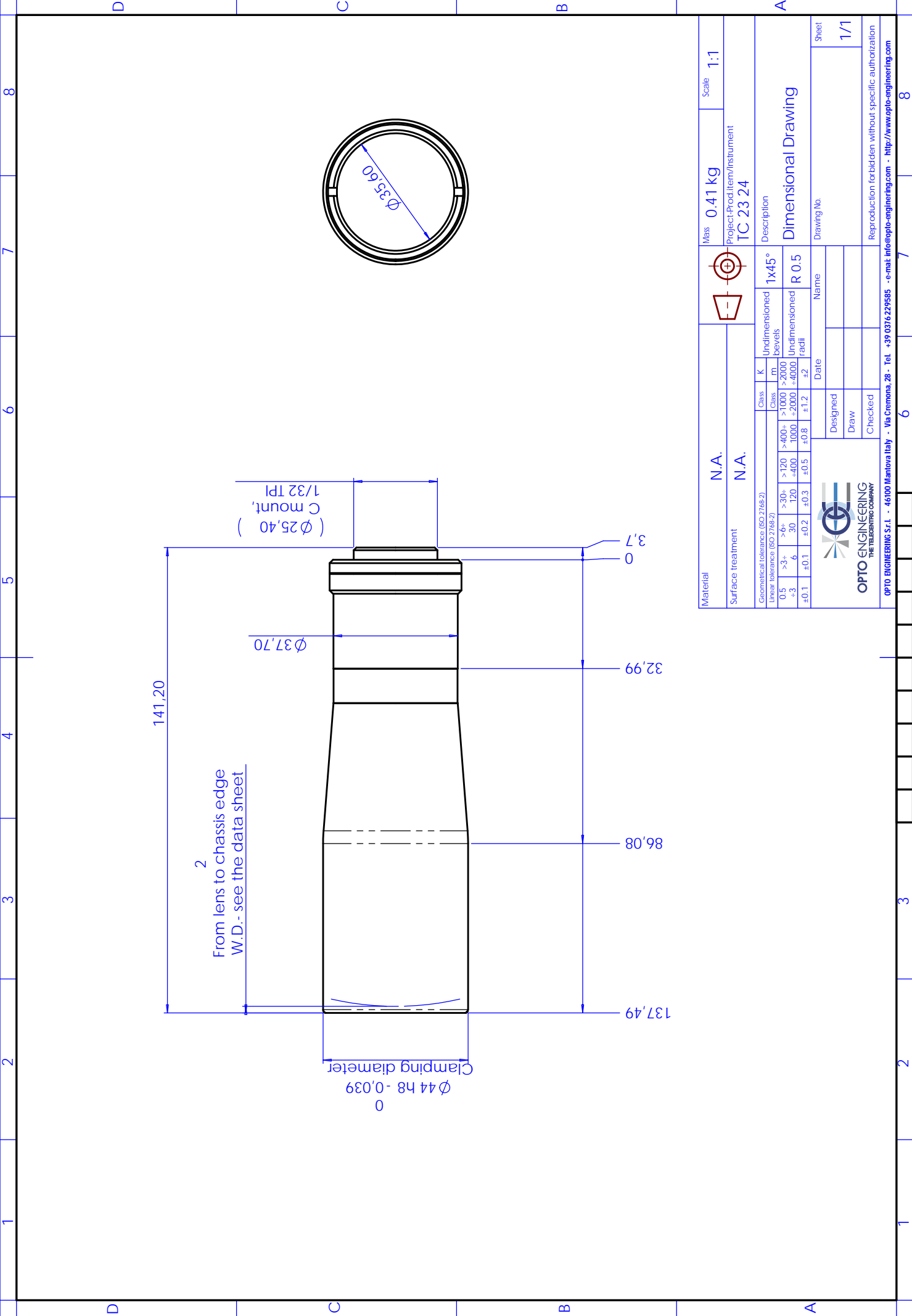
part number	TC 23 24	
<b>Magnification</b>		0,350 +/- 3%
<b>Field Of View</b>		
with 1/4" (3,6 x 2,7) detector	(mm)	10,3 x 7,7
with 1/3" (4,8 x 3,6) detector		13,7 x 10,3
with 1/2" (6,4 x 4,8) detector		18,3 x 13,7
with 1/1.8" (7,13 x 5,37) detector		20,4 x 15,3
with 2/3" (8,8 x 6,6) detector		25,1 x 18,9
<b>Working Distance</b>	(mm)	69,2 +/- 2
<b>Working F-number</b>		8
<b>Telecentricity</b>	(degree)	< 0,1
<b>Distortion</b>	(%)	< 0,10
<b>Field Depth</b>	(mm)	5,0
<b>CTF @70 lp/mm</b>	(%)	> 45
<b>Image side N.A.</b>		0,0620
<b>Object side N.A.</b>		0,0220
<b>Mount</b>		C
<b>Length</b>	(mm)	137,5
<b>External diameter</b>	(mm)	44,0
<b>Weight</b>	(g)	410

**ACCESSORIES AND OPTIONS:**


**Collimated/Telecentric illumination:**  
Compatible with LTCL24 illuminator;  
green light suggested.



**Clamping Mechanics:**  
Compatible with CMH024.



Material	N.A.		Class	K	Undimensioned bevels	1x45°	Mass	0,41 kg	Scale	1:1												
Surface treatment	N.A.		Class	m	Undimensioned radii	R 0.5	Project-Prod.Item/Instrument	TC 23 24	Description													
Geometrical tolerance (ISO 2768-2)	>30+	>120	>400+	>1000	>2000		<table border="1"> <tr> <td>Designed</td> <td></td> <td>Date</td> <td></td> </tr> <tr> <td>Draw</td> <td></td> <td></td> <td></td> </tr> <tr> <td>Checked</td> <td></td> <td></td> <td></td> </tr> </table>				Designed		Date		Draw				Checked			
Designed		Date																				
Draw																						
Checked																						
Linear tolerance (ISO 2768-2)	0.5	3	6	120	1000	+2000	Drawing No.															
	-3	±0.1	±0.2	±0.3	±0.5	±0.8	Sheet															
						±2	1/1															
<p>Reproduction forbidden without specific authorization</p> <p>OPTO ENGINEERING S.r.l. - 46100 Mantova Italy - Via Crenona, 28 - Tel. +39 0376 229585 - e-mail: info@opto-engineering.com - <a href="http://www.opto-engineering.com">http://www.opto-engineering.com</a></p>																						