

## TC 23 36

0,24x Bi-Telecentric lens  
for detectors up to 2/3"



| part number                        | TC 23 36 |              |
|------------------------------------|----------|--------------|
| <b>Magnification</b>               |          | 0,243 +/- 3% |
| <b>Field Of View</b>               |          |              |
| with 1/4" (3,6 x 2,7) detector     | (mm)     | 14,8 x 11,1  |
| with 1/3" (4,8 x 3,6) detector     |          | 19,7 x 14,8  |
| with 1/2" (6,4 x 4,8) detector     |          | 26,3 x 19,7  |
| with 1/1.8" (7,13 x 5,37) detector |          | 29,3 x 22,1  |
| with 2/3" (8,8 x 6,6) detector     |          | 36,2 x 27,1  |
| <b>Working Distance</b>            | (mm)     | 103,5 +/- 3  |
| <b>Working F-number</b>            |          | 8            |
| <b>Telecentricity</b>              | (degree) | < 0,08       |
| <b>Distortion</b>                  | (%)      | < 0,10       |
| <b>Field Depth</b>                 | (mm)     | 11,0         |
| <b>CTF @70 lp/mm</b>               | (%)      | > 40         |
| <b>Image side N.A.</b>             |          | 0,0620       |
| <b>Object side N.A.</b>            |          | 0,0150       |
| <b>Mount</b>                       |          | C            |
| <b>Length</b>                      | (mm)     | 164,9        |
| <b>External diameter</b>           | (mm)     | 61,0         |
| <b>Weight</b>                      | (g)      | 520          |

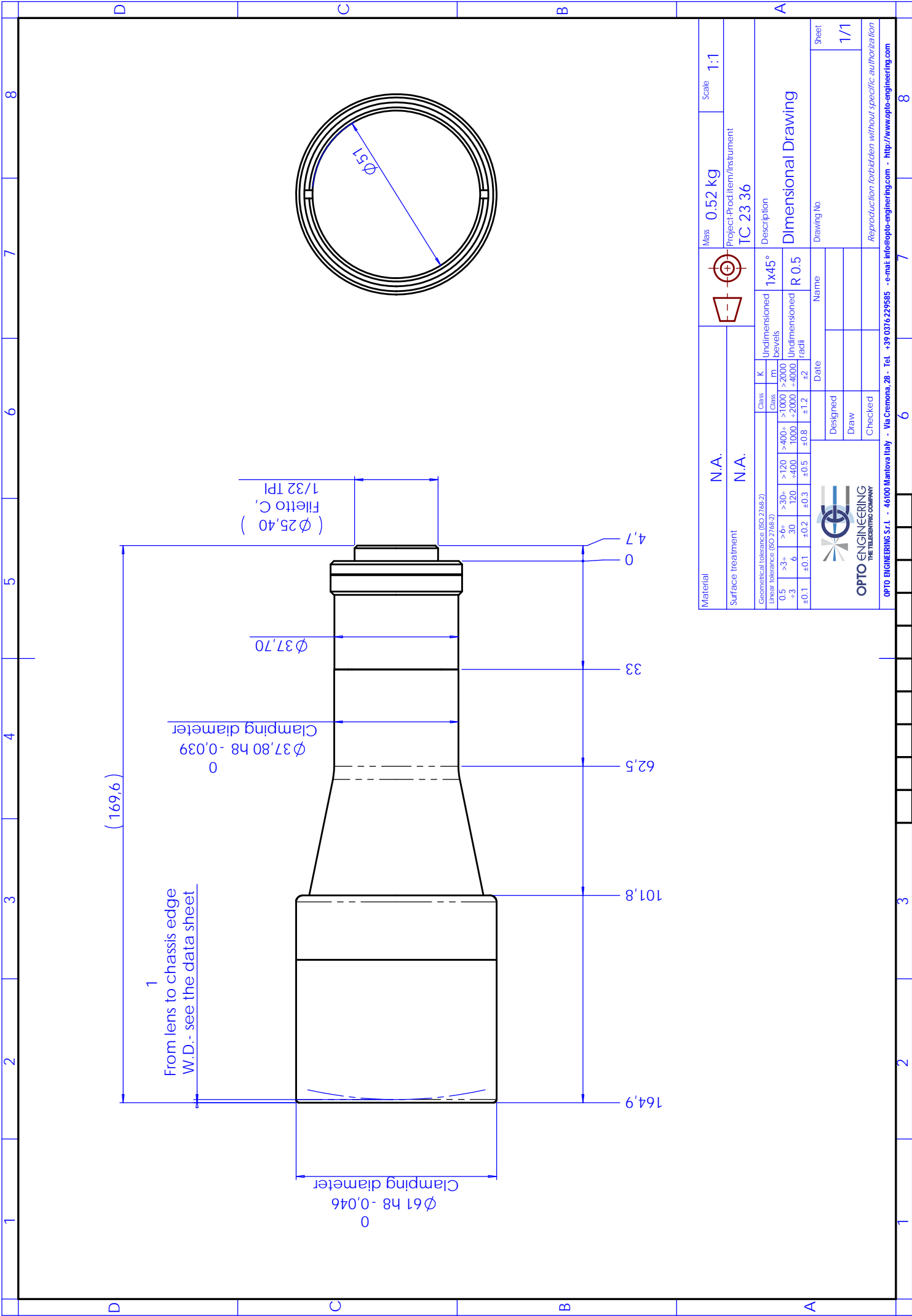
### ACCESSORIES AND OPTIONS:



**Collimated/Telecentric illumination:**  
Compatible with LTCL36 illuminator;  
green light suggested.



**Clamping Mechanics:**  
Compatible with CMH036.



|                                    |      |  |       |       |                      |       |                              |          |             |     |
|------------------------------------|------|--|-------|-------|----------------------|-------|------------------------------|----------|-------------|-----|
| Material                           | N.A. |  | Class | K     | Undimensioned bevels | 1x45° | Mass                         | 0.52 kg  | Scale       | 1:1 |
| Surface treatment                  | N.A. |  | Class | m     | Undimensioned        | R 0.5 | Project-Prod.Item/Instrument | TC 23 36 | Description |     |
| Geometrical tolerance (ISO 2768-2) |      |  | >120  | >1000 | >2000                |       | Dimensional Drawing          |          |             |     |
| Linear tolerance (ISO 2768-2)      |      |  | >30+  | 1000  | +2000                |       |                              |          |             |     |
|                                    |      |  | 6     | ±0.5  | ±1.2                 | ±2    |                              |          |             |     |
|                                    |      |  | ±0.1  | ±0.2  | ±0.8                 | ±2    | Drawing No.                  |          | Sheet       |     |
|                                    |      |  |       |       |                      |       | Designed                     |          | 1/1         |     |
|                                    |      |  |       |       |                      |       | Draw                         |          |             |     |
|                                    |      |  |       |       |                      |       | Checked                      |          |             |     |



OPTO ENGINEERING S.r.l. - 46100 Mantova Italy - Via Crenona, 28 - Tel. +39 0376 229585 - e-mail: info@opto-engineering.com - <http://www.opto-engineering.com>