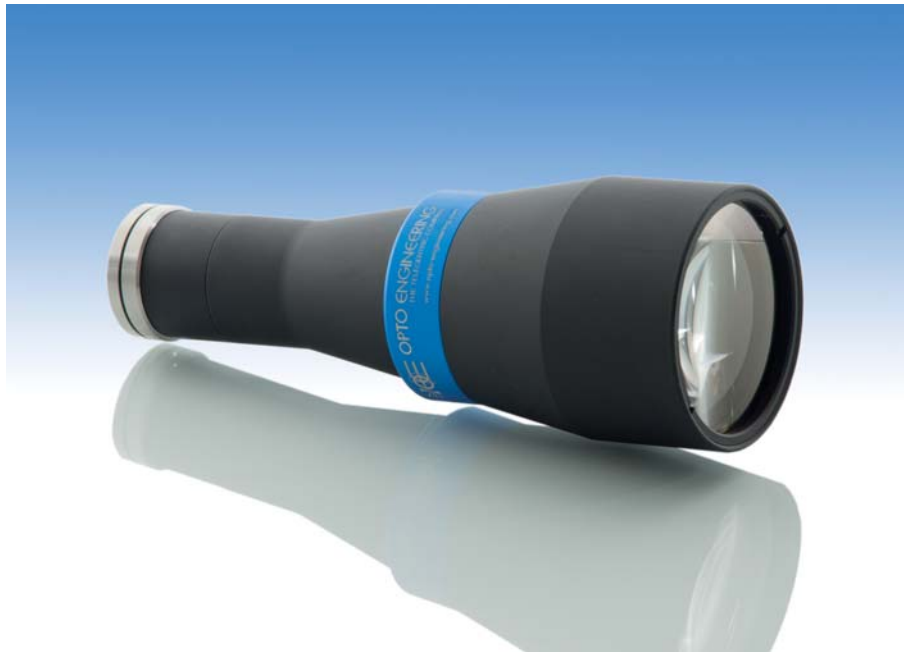


TC 23 48

0,184x Bi-Telecentric lens for detectors up to 2/3"



part number	TC 23 48	
Magnification	0,184 +/- 3%	
Field Of View		
with 1/4" (3,6 x 2,7) detector	(mm)	19,6 x 14,7
with 1/3" (4,8 x 3,6) detector		26,1 x 19,6
with 1/2" (6,4 x 4,8) detector		34,8 x 26,1
with 1/1.8" (7,13 x 5,37) detector		38,8 x 29,2
with 2/3" (8,8 x 6,6) detector		47,9 x 35,9
Working Distance	(mm)	134,6 +/- 4
Working F-number		8
Telecentricity	(degree)	< 0,1
Distortion	(%)	< 0,10
Field Depth	(mm)	20,0
CTF @70 lp/mm	(%)	> 40
Image side N.A.		0,0620
Object side N.A.		0,0110
Mount		C
Length	(mm)	201,0
External diameter	(mm)	75,0
Weight	(g)	750

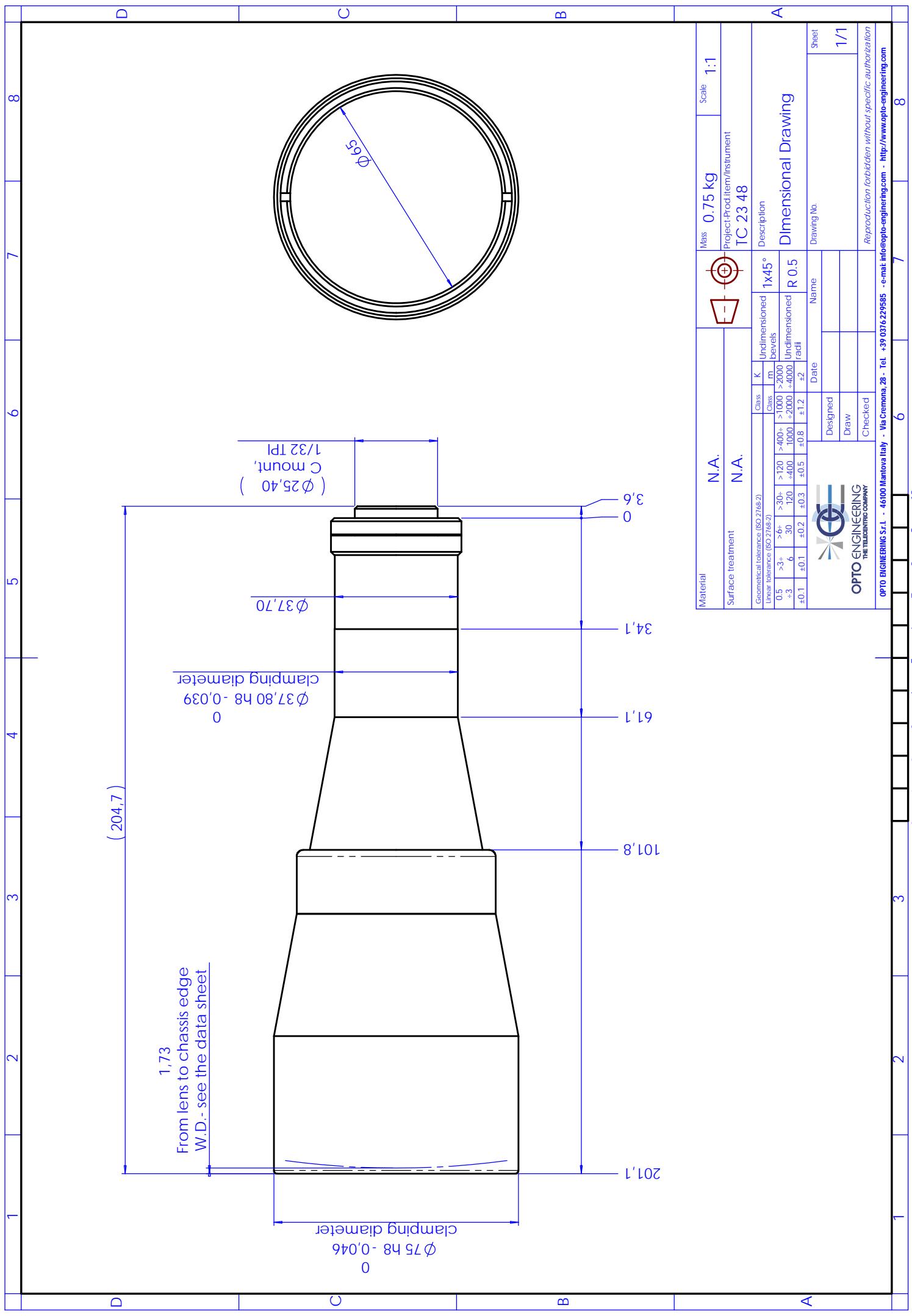
ACCESSORIES AND OPTIONS:



Collimated/Telecentric illumination:
Compatible with LTCL48 illuminator;
green light suggested.



Clamping Mechanics:
Compatible with CMH048.



1,73
From lens to chassis edge
W.D. - see the data sheet

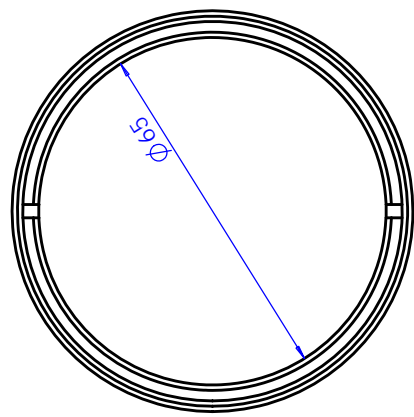
(204,7)

$\phi 37,80\ h8 - 0,039$
0
clamping diameter

$\phi 25,40$
C mount,
1/32 TPI

$\phi 37,70$

$\phi 75\ h8 - 0,046$
0
clamping diameter



Material	N.A.		Mass	0,75 kg	Scale	1:1
Surface treatment	N.A.		Project-Prod.Item/Instrument	TC 23 48		
Geometrical tolerance (ISO 2768-2)	Class	K	Description			
Linear tolerance (ISO 2768-2)	Class	m	Dimensional Drawing			
0,5	>30-	>120	>400+	>1000	>2000	1x45°
<-3	30-120	-400	1000	+2000	+4000	Undimensioned
$\pm 0,1$	$\pm 0,2$	$\pm 0,3$	$\pm 0,5$	$\pm 0,8$	$\pm 1,2$	R 0,5
					± 2	Undimensioned
						bevels
						radii
						1x45°
			Drawing No. Sheet 1/1			
OPTO ENGINEERING S.r.l. - 46100 Mantova Italy - Via Crenona, 28 - Tel. +39 0376 229585 - e-mail: info@opto-engineering.com - http://www.opto-engineering.com			Reproduction forbidden without specific authorization			