

## TC 4M 07

# Bi-Telecentric Lens for Large Detectors up to 1.2" (21.5 mm diagonal)

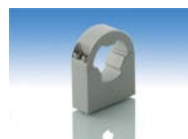


part number	TC 4M 07 (/C/F)	
<b>Magnification</b>		2,667 +/- 3%
<b>Field Of View</b>	(mm)	
with IBIS4-6600		3,9 x 2,9
with KAI2020		4,4 x 3,3
with KAI 2093		5,3 x 3,0
with MI-MV40		6,2 x 4,5
with KAI4011/4021		5,7 x 5,7
<b>Working Distance</b>	(mm)	61,2 +/- 2
<b>Working F-number</b>		22
<b>Telecentricity</b>	(degree)	< 0,1
<b>Distortion</b>	(%)	< 0,1
<b>Field Depth</b>	(mm)	0,2
<b>CTF @50 lp/mm</b>	(%)	> 30
<b>Image side N.A.</b>		0,0225
<b>Object side N.A.</b>		0,0600
<b>Mount</b>		C or F
<b>Length</b>	(mm)	183,5
<b>External diameter</b>	(mm)	28,0
<b>Weight</b>	(g)	520

### ACCESSORIES AND OPTIONS:



**Collimated/Telecentric illumination:**  
Compatible with LTCL23 illuminator;  
green light suggested.



**Clamping Mechanics:**  
Compatible with CMHO23.

