

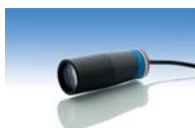
TC 4M 24

Bi-Telecentric Lens for Large Detectors up to 1.2" (21.5 mm diagonal)

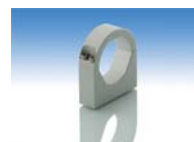


part number		TC 4M 24 (/C/F)
Magnification		0,700 +/- 3%
Field Of View		
with IBIS4-6600	(mm)	15,0 x 11,0
with KAI2020		16,9 x 12,7
with KAI 2093		20,3 x 11,4
with MI-MV40		23,5 x 17,3
with KAI4011/4021		21,7 x 21,7
Working Distance	(mm)	69,2 +/- 2
Working F-number		16
Telecentricity	(degree)	< 0,1
Distortion	(%)	< 0,1
Field Depth	(mm)	2,0
CTF @50 lp/mm	(%)	> 30
Image side N.A.		0,0310
Object side N.A.		0,0220
Mount		C or F
Length	(mm)	242,5
External diameter	(mm)	44,0
Weight	(g)	810

ACCESSORIES AND OPTIONS:



Collimated/Telecentric illumination:
Compatible with LTCL24 illuminator;
green light suggested.

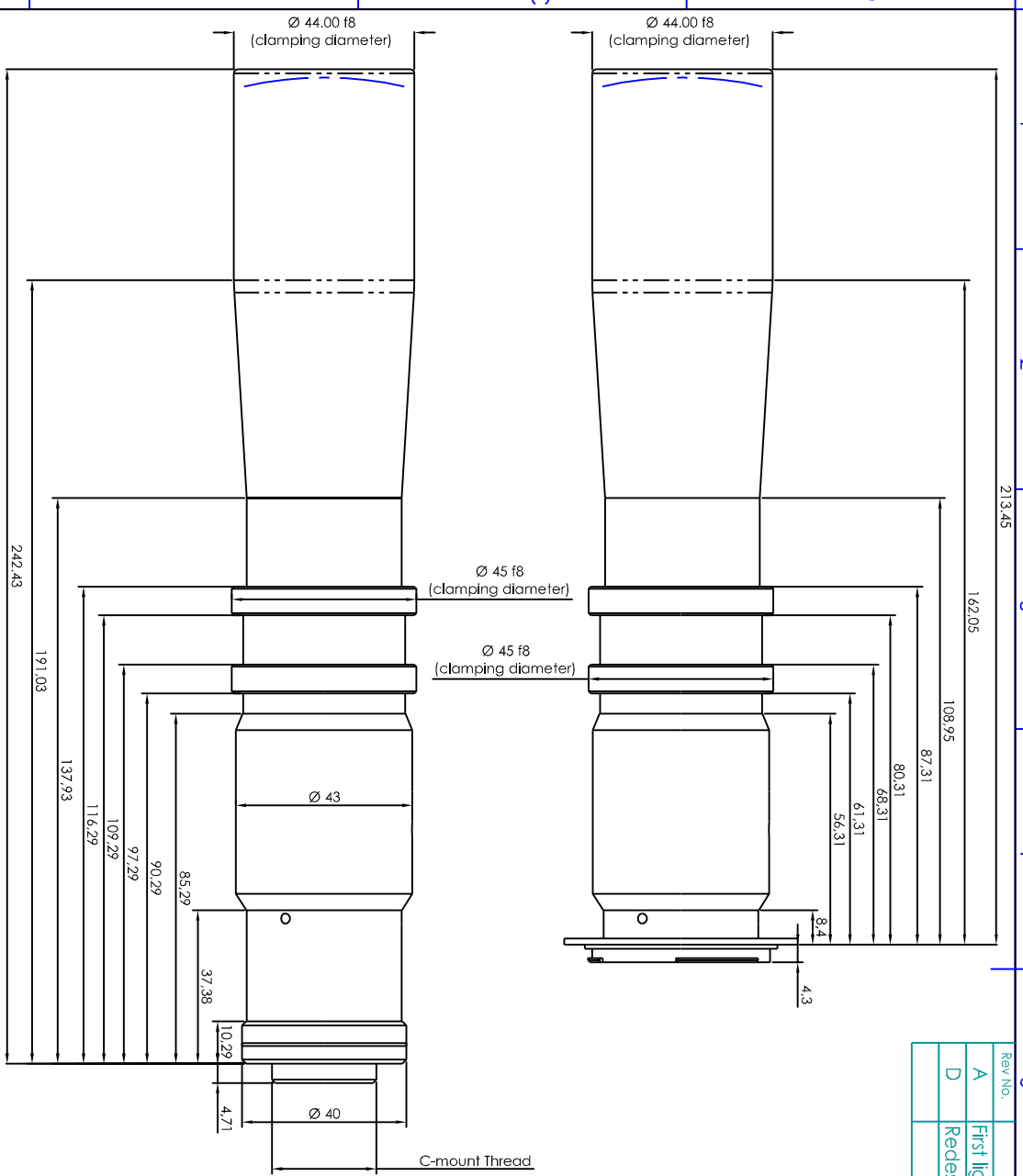


Clamping Mechanics:
Compatible with CMH024.

Rev No.	Description	Date	Name
A	First light	01/05/03	A. Vismara
D	Redesign	18/07/06	A. Vismara

TC 4M 24/F (F-mount)

TC 4M 24/C (C-mount)



Material	N.A.	Mass	0.41 Kg	Scale	1:1
Surface treatment	N.A.	Project/Prod/Item/Instrument	Telecentric lens TC4M24		

Geometrical tolerance (ISO 27692)	Class	K	Undimensioned	1x45°	Description
U:3	>3*	>100*	Undimensioned	in bevels	Assembly
+3	6	30	>2000	Undimensioned	
±0.1	±0.1	±0.2	±2	radial	R 0.5

Designed	18/07/06	A. Vismara	Drawing No.	18305-0-A-TC4M24	Sheet
Drawn	18/07/06	A. Vismara			
Checked	X	C. Sedozzi	Reproduction forbidden without specific authorization		1/1

OPTO ENGINEERING S.r.l. - 46100 Mantova Italy - Via Cremona, 28 - Tel. +39 0376 229565 - e-mail: info@opto-engineering.com - http://www.opto-engineering.com