

## TC 4M 72

# Bi-Telecentric Lens for Large Detectors up to 1.2" (21.5 mm diagonal)



part number	TC 4M 72 (/C/F)	
<b>Magnification</b>	0,245 +/- 3%	
<b>Field Of View</b>	(mm)	
with IBIS4-6600	42,9	x 31,6
with KAI2020	48,4	x 36,3
with KAI 2093	58,1	x 32,7
with MI-MV40	67,3	x 49,5
with KAI4011/4021	62,0	x 62,0
<b>Working Distance</b>	(mm)	227,7 +/- 7
<b>Working F-number</b>		16
<b>Telecentricity</b>	(degree)	< 0,1
<b>Distortion</b>	(%)	< 0,1
<b>Field Depth</b>	(mm)	19,0
<b>CTF @50 lp/mm</b>	(%)	> 30
<b>Image side N.A.</b>		0,0310
<b>Object side N.A.</b>		0,0076
<b>Mount</b>		C or F
<b>Length</b>	(mm)	404,2
<b>External diameter</b>	(mm)	116,0
<b>Weight</b>	(g)	2000

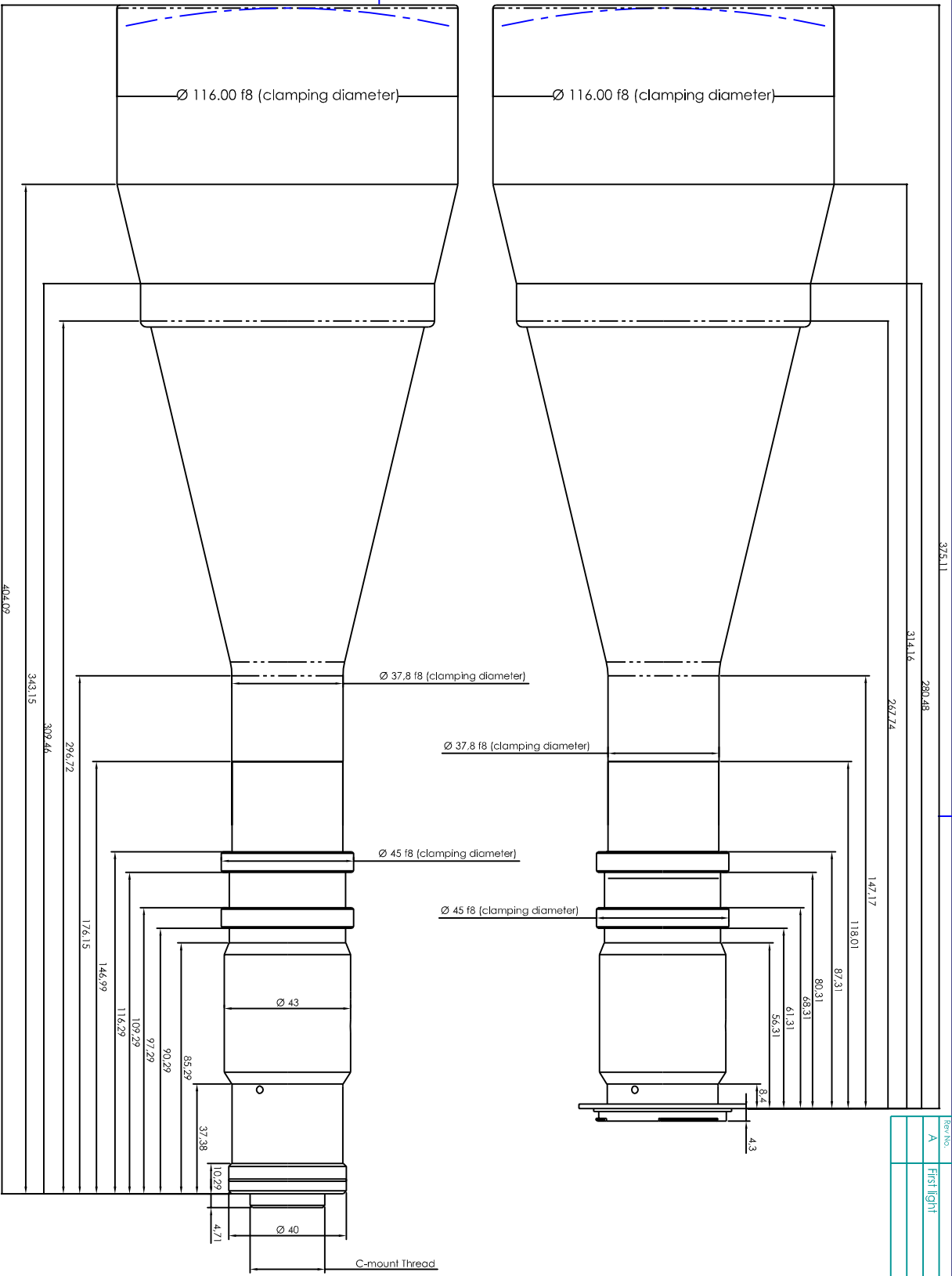
### ACCESSORIES AND OPTIONS:



**Collimated/Telecentric illumination:**  
Compatible with LTCL80 illuminator;  
green light suggested.



**Clamping Mechanics:**  
Compatible with CMH080.



TC 4M 72/C  
(C-mount)

TC 4M 72/F  
(F-mount)

Rev. No.	Description	Date	Name
A	First Light	10/03/06	A.Vismorci

<b>MAXIMON</b> Subcontract treatment N.A. N.A.		Mass: 2.0 kg Scale: 1:1	
Project/Procurement/Instrument Telecentric lens TC 4M 72			
Description: Assembly			
Drawing No.: 18310-0-A-TC4M72		Sheet: 1/1	
Reproduction of technical drawings without specific authorization			
Project/Procurement/Instrument Telecentric lens TC 4M 72			
Description: Assembly			
Drawing No.: 18310-0-A-TC4M72		Sheet: 1/1	
Reproduction of technical drawings without specific authorization			
Project/Procurement/Instrument Telecentric lens TC 4M 72			
Description: Assembly			
Drawing No.: 18310-0-A-TC4M72		Sheet: 1/1	
Reproduction of technical drawings without specific authorization			